

Signature

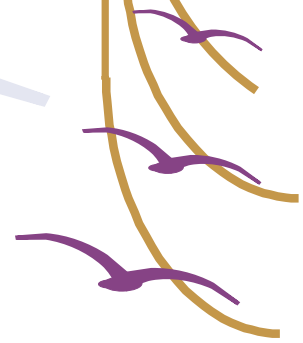


**Audiophile Class AB
High Performance
Home Theater Stereo Amplifier**



Tube Emulator

USER'S MANUAL



SA SOARING AUDIO INC.™



Congratulations!

You will receive many hours of incredible listening pleasure from this superbly designed amplifier. It will enable you to hear deeper into all the rest of your audio system. For maximum enjoyment, performance and safety, read this manual before operating the amplifier.

Amplification Features

- ◆ Careful attention has been paid to phase response at all frequencies. It is faithful to the original.
- ◆ Extremely wide and deep sweet spot. Ideal for home theater seating.
- ◆ High current output: floor pounding bass with super dynamic mids and highs.
- ◆ Fast slew rate: No smearing of harmonic detail. You will hear details in your favorite recordings that have been hidden for years.
- ◆ Massive heat sinks eliminate the need for a fan.
- ◆ Power supply ripple is so low that you'll think the amplifier is off when the source is muted.

Tube Emulator

Patented analog image enhancement provides:

- ◆ Acoustic Restoration: Smooths out digital grit.
- ◆ Enhanced imaging: Left and right enhanced outputs combine to form a solid phantom center channel that is wide and deep.
- ◆ Dynamic detailing: Increases the perceptual dynamic range, at any output level.

The Signature is designed to run all speakers superbly, including exotic speakers with difficult crossovers, such as ribbons and electrostats.

Special Design Features:

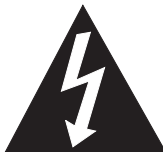
12 VDC Remote Turn-On - From preamp or surround sound Processor

Soft Start - Low inrush circuit limits turn-on current to about 7 Amps

WARNINGS



WARNING: TO REDUCE RISK OF ELECTRIC SHOCK, DO NOT REMOVE ANY PART OF CASE. NO USER-SERVICEABLE PARTS INSIDE. REFER SERVICING TO QUALIFIED SERVICE PERSONNEL.



This symbol is intended to alert the user to the presence of uninsulated "dangerous voltage" within the product's enclosure that may be of sufficient magnitude to constitute a risk of electric shock to persons.



This symbol is intended to alert the user to the presence of important operating and maintenance (servicing) instructions in the literature accompanying the product.

CAUTION: TO PREVENT ELECTRIC SHOCK, MATCH WIDE BLADE OF PLUG TO WIDE SLOT, FULLY INSERT.

WARNING: TO REDUCE THE RISK OF FIRE OR ELECTRIC SHOCK, DO NOT EXPOSE THIS EQUIPMENT TO RAIN OR MOISTURE.



This symbol means Double Insulated. Premium parts are used so a third wire ground is not needed. This eliminates the possibility of ground loops, making the background quieter and preventing hum.

IMPORTANT SAFETY INSTRUCTIONS

1. Read these instructions.
2. Keep these instructions.
3. Heed all warnings.
4. Follow all instructions.
5. Do not use this apparatus near water.
6. Clean only with dry cloth.
7. Do not block any ventilation openings. Install in accordance with the manufacturer's instructions.
8. Do not install near any heat sources such as radiators, heat registers, stoves, or other apparatus (including amplifiers) that produce heat.
9. Do not defeat the safety purpose of the polarized or grounding-type plug. A polarized plug has two blades with one wider than the other. A grounding type plug has two blades and a third grounding prong. The wide blade or the third prong are provided for your safety. If the provided plug does not fit into your outlet, consult an electrician for replacement of the obsolete outlet.
10. Protect the power cord from being walked on or pinched particularly at plugs, convenience receptacles, and the point where they exit from the apparatus.
11. Only use attachments/accessories specified by the manufacturer.
12. Use only with the cart, stand, tripod, bracket, or table specified by the manufacturer, or sold with the apparatus. When a cart is used, use caution when moving the cart/apparatus combination to avoid injury from tip-over.
13. Unplug this apparatus during lightning storms or when unused for long periods of time.
14. Refer all servicing to qualified service personnel. Servicing is required when the apparatus has been damaged in any way, such as power-supply cord or plug is



IMPORTANT SAFETY INSTRUCTIONS (cont.)

damaged, liquid has been spilled or objects have fallen into the apparatus, the apparatus has been exposed to rain or moisture, does not operate normally, or has been dropped.

Power Sources: Due to the large power draw when the amp is being used, use only the supplied 14 gauge power cord or one that is heavier. ♦ Only operate this unit from the type of power source indicated on the unit label. ♦ As long as the unit is connected to the wall outlet, it is not disconnected from the AC power source even if the unit itself is turned OFF. ♦ Always disconnect by grasping the power plug itself, never pull on the cord. ♦ Do not overload wall outlets, extension cords, or other receptacles as this can result in the risk of electric shock or fire. Please note watts used on unit label.

Moisture & Water: Do not place a container with liquid on top of this unit. ♦ Do not use this unit near water (for example: a swimming pool, bathtub or sink). ♦ Do not allow water to enter this unit or allow the unit to become wet. ♦ The apparatus shall not be exposed to dripping or splashing.

Liquid & Object Entry: Never push any kind of objects into this unit through openings as they may short-out parts or may touch dangerous voltage points that could result in an electric shock or a fire. ♦ If any liquid or object falls into the unit, unplug it and have qualified personnel check it before operating it any further.

Servicing & Replacement Parts: Refer all servicing to qualified service personnel. ♦ Opening or removing the cover may expose you to dangerous voltage or other hazards. ♦ If replacement parts are needed, make sure the service personnel use replacement parts specified by the manufacturer or that have the same characteristics as the original part. Fire, electric shock, other hazards or decrease in performance may result from unauthorized substitutions. ♦ After any repairs or service to this product, have the service personnel perform safety checks to make sure that the product is in proper operating condition.

Connections: When connecting the product to other equipment, turn off the power and unplug all of the equipment from the wall outlet. This will avoid possible electric shock and serious personal injury. ♦ When making any connections, read and follow the instructions of this manual and the owner's manual of the other equipment.

Sound Volume and Distortion: Before you turn on the product, reduce the volume to the minimum level. This will avoid sudden high volume which may cause hearing or speaker damage. ♦ Never allow the product to output distorted sound for a long time. It may cause speaker overheating and fire. ♦ Your hearing is priceless. If your ears ring after listening, you are listening too loud for too long..

TRICKS & TIPS FROM THE GOLDEN DESIGN TEAM

(See last page for "The Birth of an Incredible Amp")



Professor: Dr. Bill Avery explains the scientific reasons for recommendations in this manual.



Golden Ears: Daniel Kolbet gives ideas that will improve the quality of the sound in your set-up.



Bean Counter: The CFO complains about added costs. The Golden Design team always insisted on quality of sound over the cheapest method.

Go to the web site soaringaudio.com to find other Tricks & Tips.

Have some Tricks & Tips of your own? Email them to us and we may add them to the Tricks & Tip Library.

Installation for Signature Amp

For maximum performance and life, keep your amplifier cool.

Ventilation: Heatsinks and openings on the cabinet are provided to ensure reliable operation and to protect the product from overheating. The openings and heatsinks should never be blocked or covered. There must be at least 3 inches of free space on both sides, back, and the top. The front must be open. For proper airflow through the bottom openings and through the heatsinks, do not place the unit on any soft surface such as a bed, sofa, or rug.



Professor: The single most important thing you can do to extend the life of electronic products is to keep them cool. For every 10°C (18°F) hotter that equipment runs, the life of the components is cut in half. Since we have eliminated the need for a fan by using massive external heatsinks and many internal heatsinks, it is absolutely crucial that there be adequate air flow around the amplifier. Do not place the amplifier in an enclosed cabinet.



Bean Counter: Our Production Manager emailed us that adding a fan would lower costs. Heatsinks could have been reduced and many of the expensive holes in the top and bottom could have been avoided. But a fan means background noise and can make speakers buzz, so the fan was vetoed.

Rear Connections (See Fig. 1 on Page 6)

Before connecting the product to other equipment, turn off the power and unplug all of the equipment from the wall outlet. This will avoid possible electric shock and serious personal injury. When making any connections, read and follow the instructions of this manual and the owner's manual of the other equipment.

AC Power Connector In order to achieve the maximum possible performance at the highest playing levels, it is important to use a heavy duty power cord such as the 14 gauge one supplied. It is best to plug directly into the wall. If a plug strip or extension cord must be used, they should be as heavy as the power cord. Use only the power source indicated on the label.

2 RCA Inputs Red - right. White - left. Turn the VOLUME all the way counterclockwise before making any connections, otherwise you can injure the speakers. The IN LEDs reflect the level of the signal going into the RCA Inputs. (See "Front Controls")



You may want to try running inputs directly from the source to the Signature. This will prevent the sound from being degraded by any piece of equipment placed in between the source and the Signature. However, some sources may have too weak of a signal for maximum tube emulator effect. Ask your dealer or contact us for what equipment has been found to work well with the Signature.

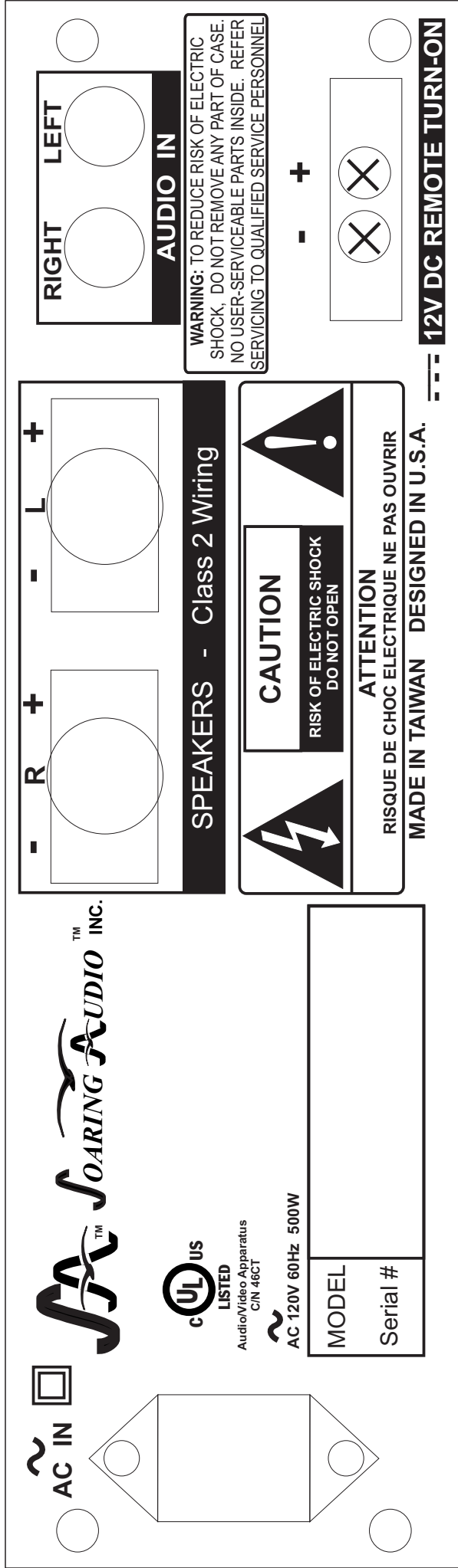
Speakers The Signature will drive speaker loads from 3-16 ohms.
150watts/channel at 4 ohms, 100 watts/channel at 8 ohms

The Signature is designed to run all speakers superbly, including exotic speakers with difficult crossovers, such as ribbons and electrostats.



Speaker Wire: The Signature can supply over 9 amps of current to the speaker load. This means that with the Signature, we are concerned with inductance much more than capacitance. In general, wire that is 14 gauge or heavier with low inductance will give the best performance.

Fig. 1 Rear Panel SIGNATURE





Golden Ears: It is best to use the same length of speaker wire for a pair of speakers. Not all speaker cables sound the same. Try different ones on your system.

Speaker Warning: Cone speakers lose their flexibility with age. The powerful bass may tear older speaker cones. Speaker damage can occur before your hear distortion.

Cardas Speaker connectors Right and Left are in the same orientation as Right-Left RCA connections. Wires go on either side of the center post between center post and copper. Be sure to connect the + side of the speaker wire to the side of the Cardas connector embossed with +. Firmly tightening the screws will give you better sound.



Bean Counter: Cheaper connectors are available overseas. Why buy Cardas connectors in the USA and ship them overseas to the manufacturer? You guessed it: the oxygen free copper and short signal path make them sound better, work better, and look real cool.



Golden Ears: Tighten all connections, as loose connections can cause arcing and corrosion. Both can degrade the sound. At least once a year, clean all audio connections on your system with isopropyl alcohol.

12VDC Remote Turn-On This is an optional convenience feature. Two screw terminals on the lower right can be used to connect to the remote turn-on feature of some preamplifiers and surround sound systems. Make sure the plus and minus are connected properly. The amp must be turned Off the same way it is turned On: If remote turn-on is used to turn On the amp, then it must also be used to turn Off the amp. If the front power button is used to turn On the amp, then it must also be used to turn Off the amp. The turn-on circuit is designed to respond to a wide range of voltages. It will work from 3VDC to 18VDC.

What does hum 120dB below the peak output mean? Noise is measured in decibels (dB). The noise floor of a normal CD is 96dB below peak output, a limitation of 16 bit encoding. If you go from 96 dB to the 120 dB of the Signature, there is a difference of 24 dB. This is not 25% better, because dB are not like normal numbers. With dB, every 3 dB lower is half the noise. So the Signature is over 100 times quieter. (With hum, the more dBs below the peak output, the quieter it is.) This means that the hum components are not louder than the noise floor at only 1 watt output. In other words, you can enjoy the full dynamic range of a CD at 1 watt output without the hum degrading the CD's noise floor.



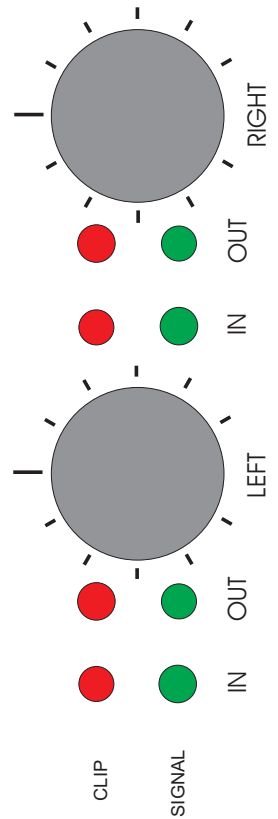
Perform the hum test yourself. With the amp knobs where you normally listen and everything off except the amp, stick your head as close as possible to the center of the woofer. (Don't touch it!) With most amps you will hear background hum. The Signature is completely quiet. Check your other equipment: Preamp - turn it on and repeat the test. CD/DVD - plug directly into the amp inputs. Play something, put it on PAUSE, and then listen for hum, motor noise and background clutter.



Perform the thumb print test yourself. (This is a fanatic's test for an entire system.) Clean a CD. Then put a thumb print on the bottom side of the CD. Play the CD and listen carefully - the CD player will compensate for the thumb print, but it will not make a perfect correction. Then clean the CD and listen again. If you can hear the difference with and without the thumb print, then your system is capable of revealing great spatial detail. If your system does not pass this test, then the fault is not in the Signature.



Fig. 2
Front Controls
SIGNATURE





Operation of Front Controls

Controls on Right Side

Power Switch: Push ON

Power LED Illuminates when ON

Master Volume: Rotary volume control knob on right side

Controls on Left Side: Tube Enhancement

Two left knobs control the amount of enhancement of the signal for the left and right channels. Each channel has a set of 4 LEDs:

Input pair on the left - reflect the level of the RCA Inputs.

Adjusted with the output level of the pre-amp.

Output pair on the right - reflect the amount of enhancement.

Adjusted by the two Tube Enhancement knobs on the left side.

Input Green indicates presence of normal signal level for optimum enhancement. If Green IN light is not on, signal IN on the rear RCA inputs can be increased. The unit has been designed so that during normal music passages, the green Input LED should be on. If it never comes on or only very occasionally, you are probably not getting the best signal to noise ratio from your system. For good dynamic range the green input LED will be on most of the time.

Input Red (above the input green) indicates that the maximum level for which the input was designed has been reached (5 Volts RMS). This will only happen if the preamp is too high. Clipping occurs just above when the red LED comes on. Adjust the input level so **the IN red LED never comes on**. Back down on the output level of the preamp if the IN red LED comes on.

Output Green indicates a good enhancement to the signal.

Output Red indicates that the maximum design level of enhancement has been reached. This light should normally not come on, turn the knob down til it goes off.

Initial Set-up of Tube Enhancement & Phantom Center Channel

1. With power OFF, turn left two knobs to 12 o'clock.
Turn Master Volume all the way down.
WARNING: This amp is capable of blowing out many speakers, so it is vital that the Master Volume be turned all the way down.
2. Push Power ON and start playing the loudest piece that you are going to play.
3. Wait 30 seconds to warm up, then turn up Master Volume to desired level.
4. IN LEDs: If green IN lights do not come on with a loud passage, increase the input level from the preamp.
Adjust input level so the red IN lights never come on.
5. Turn up Left Tube Enhancement knob until OUT red LED blinks occasionally, then back off a little.
6. Turn Right Tube Enhancement knob until image is centered.
7. To control volume, use Master Volume or the remote control on the preamp.
8. For less enhancement: turn left & right controls down, then turn the Master Volume all the way up. Adjust the volume with only the left & right controls for balance.



Troubleshooting

If you are experiencing problems - check the wiring. 90% of all problems are due to wiring.

RED POWER LED off. The unit is not turned-on. Push-in POWER button or use remote turn-on remote control. Is the power cord plugged into both the back of the unit and into a suitable power outlet? The simplest way to check for power at the outlet is to unplug the amp and plug in a light.

There is no output. Has the unit warmed up? It takes about 30 seconds from when the POWER button is pushed in. Is the MASTER VOLUME turned-up? (Never start with it turned up - you can damage the speakers or your ears!) Is there signal into the RCA jacks? Use a volt meter or plug into another piece of equipment to confirm that a signal is present.

GREEN INPUT LED does not come on. Signal IN on the rear RCA inputs can be increased. (See Operation of Front Controls.)

RED INPUT LED comes on. Signal IN on the rear RCA inputs is too high; reduce the level from the source. These LEDs should *never* come on. (See Operation of Front Controls.)

GREEN OUTPUT LED does not come on. Turn up the channel knobs on the left side.

RED OUTPUT LED comes on. Turn down the channel knobs on the right side.

The Amplifier shuts off unexpectedly. There are two possibilities that you can fix.

1) Blown circuit breaker: Check to make sure there is power to the amp from the outlet (the circuit breaker may have blown). The simplest way to check for power is to unplug the amp and plug in a light. If the light does not work, the circuit breaker has tripped because there are too many appliances on the circuit. 2) Thermal shut-down: The left and right channels each have a thermal protector that will turn the amplifier off if either side gets too hot. The amplifier is very conservatively designed and can continuously put out 150 watts to each channel indefinitely without getting too hot, even while sitting in a 100°F room. The only way that the thermal protector can operate is if a component failed in the amplifier or the amplifier has been placed in a confined space blocking proper ventilation. If the amplifier is placed on a shelf, there must be at least 3" clearance on both sides, the back, and the top. The front of the amplifier should be near the front of the shelf and the whole front area must be open. To see whether the thermal protection shut off the amplifier, very briefly - much less than one second - touch the fins. If you can hold your hand or a finger for one second comfortably, then it is probably not hot enough to have tripped the thermal sensors. If it feels very hot, the sensors could have tripped. In that case, turn off or disconnect the amplifier and wait fifteen minutes. After the amplifier has cooled, relocate it in a more open place and try plugging it in and turning it on. If the fins are now comfortably cool to the touch, and you know that the power is good to the outlet, and if after pressing the power ON button the red LED does not come on, then contact your dealer for information on how to obtain help from qualified service personnel.

Fuses There are six fuses which can be replaced by qualified service personnel. The circuits are very conservatively designed. The fuses will not blow in normal operation. If a fuse has blown, it is probably because another component which is not user replaceable has failed.



Typical Specifications Signature Amplifier

(Amplifier with Tube Enhancement - 300 watts)

Load Impedance: Rated for 3 to 16 ohms in Stereo mode

Output Power per Channel: 150 watts at 4 ohms RMS
100 watts at 8 ohms RMS

Input Level: 1-4 volts RMS **Required AC Mains:** 60Hz 120VAC

Weight: 38 pounds **Watts:** 6 plugged in; 60 on-idling; 500 full power

Frequency Response: -3dB from 0.1 Hz to 300 kHz at 1 watt

Hum: typically over 120dB below peak output (Over a 100 times quieter than the noise floor of a CD.)

Grounding: Double insulated. Premium parts used so a third wire ground is not needed. This eliminates the possibility of ground loops, making the background quieter and preventing hum.

UL Listed: Designed in accordance with UL6500 Audio/Video Apparatus - a more stringent worldwide standard

Options: Rack mount kit ♦ Balanced Input ♦ 240 VAC

Warranty

2 Year Parts and Labor

5 Year Parts (See web site for current Labor rate.)

Warranty is for any manufacturing defects or early component failures and is limited to repair or replacement of the unit. Soaring Audio is not responsible for any consequential damage due to not following the instructions in this manual.

Read the Troubleshooting section of this manual and check the web site for FAQ. Call your dealer before shipping the unit to us, as some things may be able to be handled by local qualified service personnel. You may also email us about your problem (support@soaringaudio.com) and technical support will offer suggestions

Ship the unit to us prepaid and insured using BOTH of the original shipping containers. Include a copy of the receipt and indicate what the problem is. Be sure to include your return address, phone number and email. Most repairs will be completed within two business days. We pay return shipping for warranty repairs.

Problems caused by user error (e.g. water in the unit) will be billed parts, labor and return shipping. We will contact you before beginning repairs with an estimate and to receive your credit card information.

2900 Fantasy Lane ♦ Sparks NV 89441
PHONE 775-425-8000

WEB www.soaringaudio.com
EMAIL sales@soaringaudio.com

Copyright 2020 Soaring Audio Inc. All rights reserved. Products, features and specifications subject to change without notice